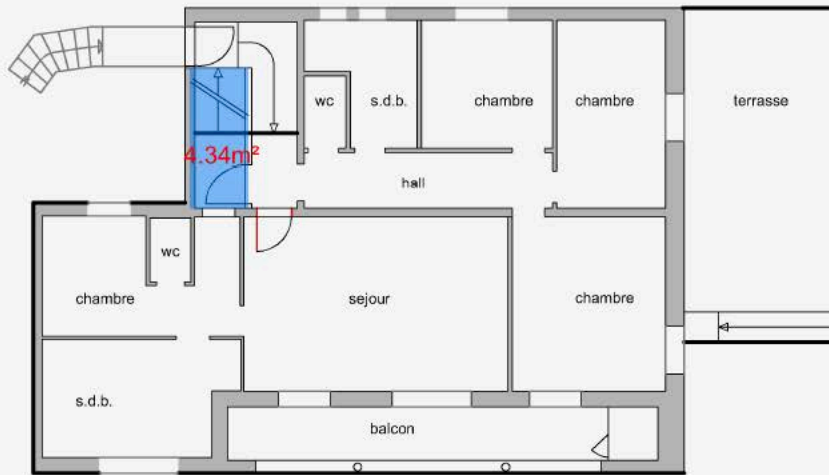
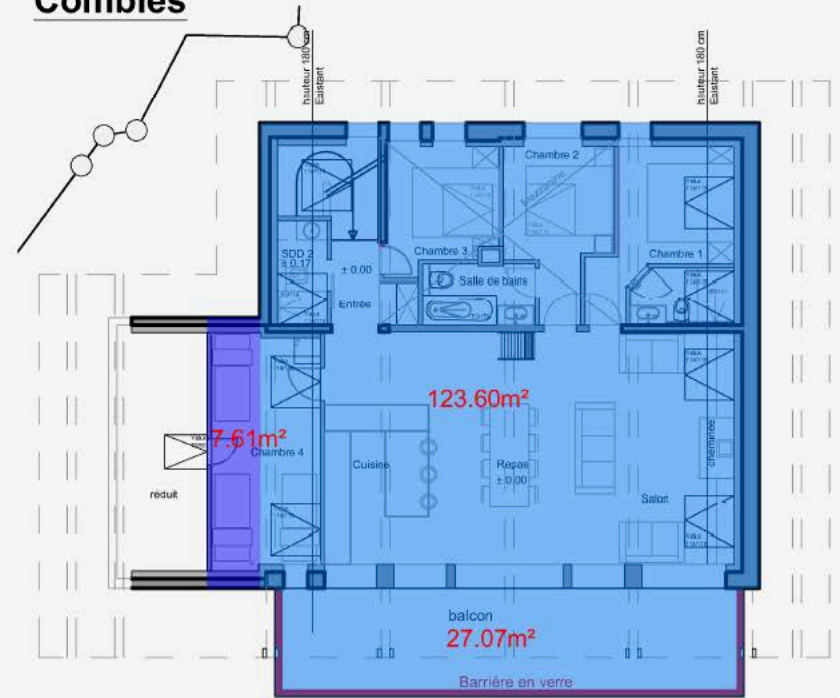


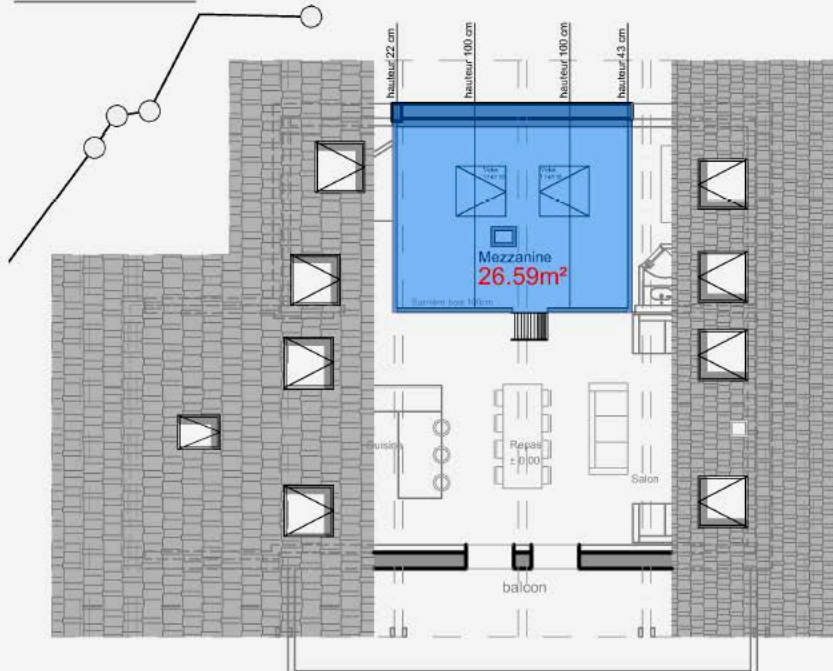
1er étage



Combles



Mezzanine



Calculs surface de vente

1er étage - Cage escalier = 4.34m²

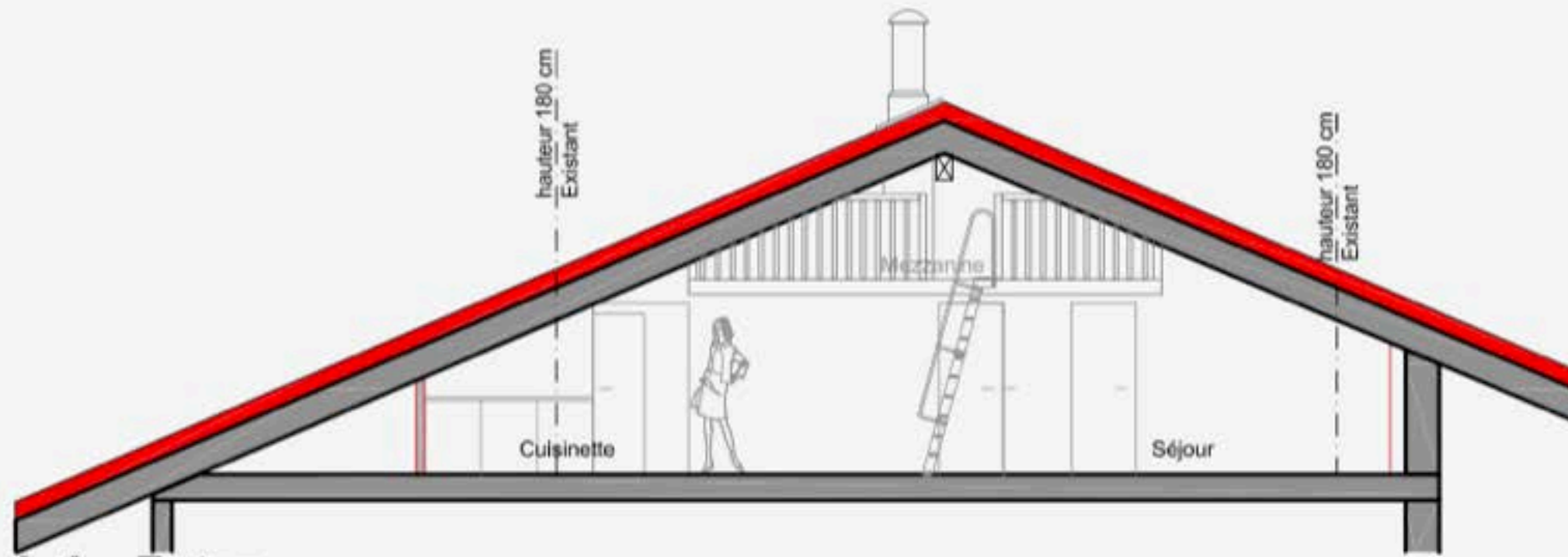
Combles - Appartement = 123.60m² + (7.61m²/2) = 127.40m²

Combles - Balcon 1/2 = 27.07m² / 2 = 13.53m²

Combles - Mezzanine 1/3 = 26.59m² / 3 = 8.86m²

Surfaces total appartement = 154.13m²

Coupe A-A - Futur



Combles - Futur

